

Gas Well Covers & Seals

These dual extraction, gas tight well covers and seals pair perfectly with VP Series pneumatic pumps. Provides necessary ports and fittings for down well pump tri-tubing and easy access for inspection and sampling. Can be equipped with optional bracketed air filter/regulator.



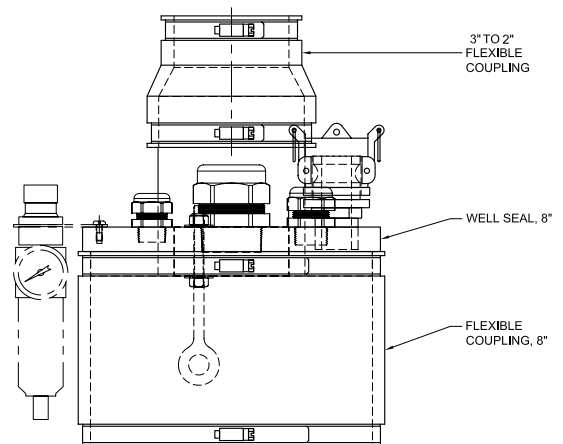
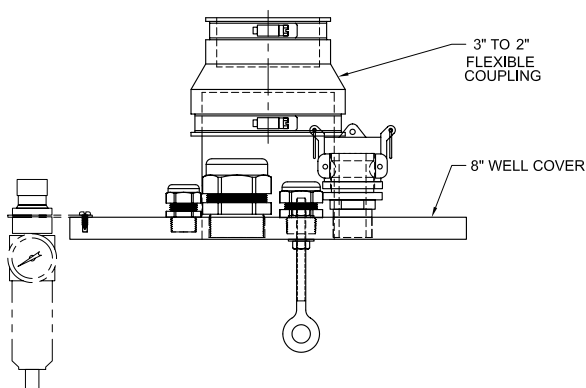
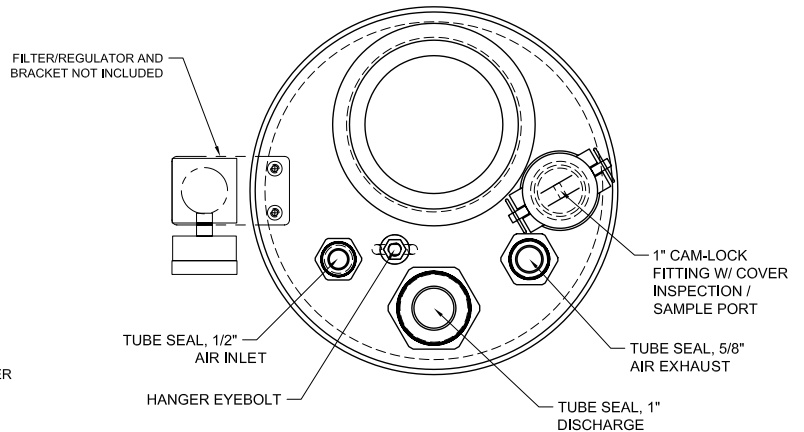
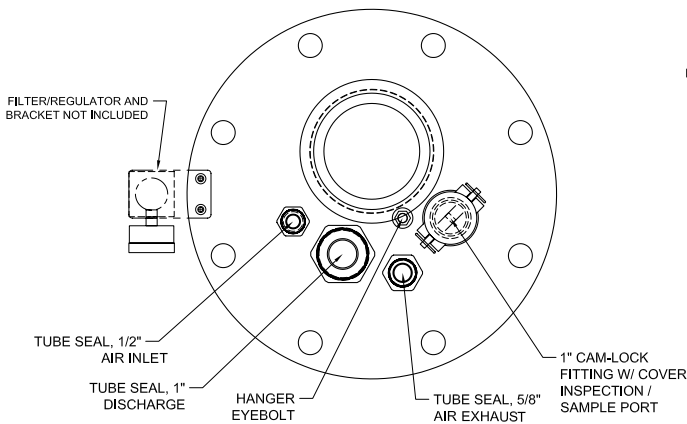
Well Cover

Standard Features Include:

- 6" and 8" sizes (8" Shown)
- 1" Liquid Discharge
- 1/2" Air Inlet
- 5/8" Air Exhaust
- 1" Inspection/Sample Port
- 3" to 2" Flexible Coupling (4" to 3" Available)
- 316SS Hanger Eyebolt



Well Seal



* 4 inch models also available

Sold By:

Viridian America Environmental Pumps

19900 County Rd. 81

Maple Grove MN 55311

1-800-762-8418 | info@viridianamerica.com

www.viridianamerica.com